

Installation Manual



E&I-Designer 2021

April 2021

**© ITandFactory GmbH, D-65812 Bad Soden,
Germany**

Table of Content

1.	Installation Requirements	3
	Installation Prerequisites	5
2.	Local Client Installation	6
3.	Post Installation	14
	Startup Tool for CADISON	14
	Necessary Adjustments in AutoCAD Designer-Interface	16
	Installation with a different AutoCAD version	18
	Installation of the Network License Manager (NLM)	19
	Licensing	19
4.	Installation in unattended mode	20
5.	Uninstall.....	22

1. Installation Requirements

The CADISON E&I-Designer 2021 software in the presented form was tested and released for the following general conditions:

Supported Operating System (64-Bit):	Windows 10 Pro (version 1607 or higher) Windows 10 Enterprise (version 1607 or higher) Citrix XenApp 7.6, Citrix XenDesktop® 7.6 *
Supported Applications (64-Bit):	AutoCAD 2022 AutoCAD 2022 with Architecture Toolset AutoCAD 2022 with Mechanical Toolset ** AutoCAD 2021 AutoCAD 2021 with Architecture Toolset AutoCAD 2021 with Mechanical Toolset ** AutoCAD 2020 AutoCAD 2020 with Architecture Toolset AutoCAD 2020 with Mechanical Toolset ** Microsoft Office 2016 (64-Bit and 32-Bit) Microsoft Office 2019 (64-Bit and 32-Bit)
Additional supported Software (64-Bit):	PDF Writer Navisworks 2020, 2021 or 2022 (corresp. to AutoCAD version) DWG Trueview 2020,2021 or 2022 (corresp. to AutoCAD version)

* Citrix needs to be used when CADISON E&I-Designer 2021 is run in a WAN environment.
The supported version of Citrix depends on used AutoCAD version
(<https://knowledge.autodesk.com/support/autocad/getting-started/caas/simplecontent/content/autodesk-citrix-ready-certified-products.html>)
CADISON E&I-Designer 2021 was not tested with the above-mentioned Citrix versions.

** The Mechanical functionality is not available in the Designer.



- ✓ Please refer to the document "EAI_System Requirements" for further information about the updates and service packs of third-party products, which have been released for CADISON E&I-Designer 2021.
- ✓ CADISON E&I-Designer 2021 is designed for deployment on a NTFS partition. Installation and use of CADISON E&I-Designer 2021 on a FAT partition may lead to undesired effects.
- ✓ We recommend using CADISON E&I-Designer 2021 only in a homogeneous environment, this implies not to use different versions of CADISON E&I-Designer 2021.
- ✓ Autodesk products that are installed in your environment must have the same version number. Installation and use of different version of various Autodesk products with CADISON E&I-Designer 2021 is not supported.
- ✓ Make sure to select Express Tools during AutoCAD installation. Otherwise, the plotters (e.g. DWF6 ePlot) needed for CADISON E&I-Designer 2021 functions are not available.
- ✓ The CADISON Report-Generator and the import and export of data to Excel require Office 2016 or Later.

Versant DB: 9.3.0.37 (VDS-Patch-Level: 9.3.0.37.2974)

Licensing: License query performed via "softkey" for licensing on a single or on multiple workstations of Windows 7, Windows 10, Windows Server 2012, Windows Server 2016 or Windows Server 2019 operating systems.

Installation Prerequisites

Before the installation can be started, the system, on which CADISON E&I-Designer 2021 will be installed, should be inspected:

- At first do run all additional programs that are necessary for CADISON E&I-Designer 2021 to verify their correct operation, e.g., AutoCAD and MS Office.
- Please ensure that the TCP/IP protocol is installed and adjusted to the system.
- The storage requirements for a full installation amounts to approx. 2 GB (without databases and project data).
- We recommend installing DWG TrueView before installing CADISON E&I-Designer 2021.

DWG TrueView can be downloaded from Autodesk site from the link given below:

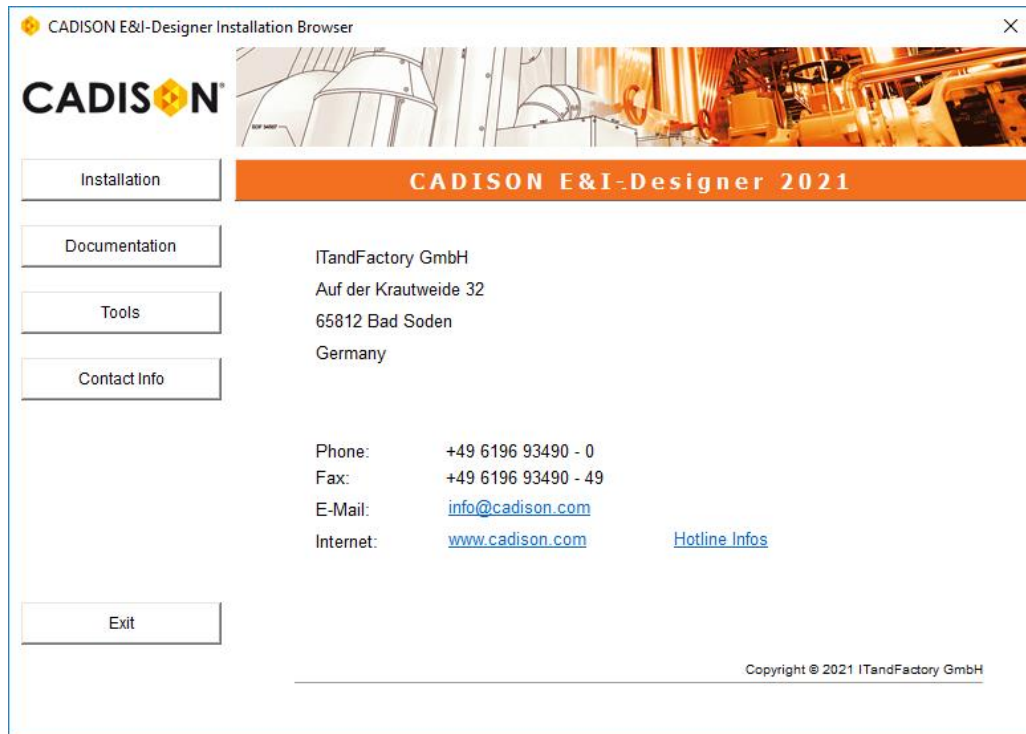
<https://knowledge.autodesk.com/support/dwg-trueview/learn-explore/caas/sfdarticles/sfdarticles/Where-to-download-previous-versions-of-DWG-TrueView.html>

Please select the correct version of DWG TrueView corresponding to your AutoCAD version and language.

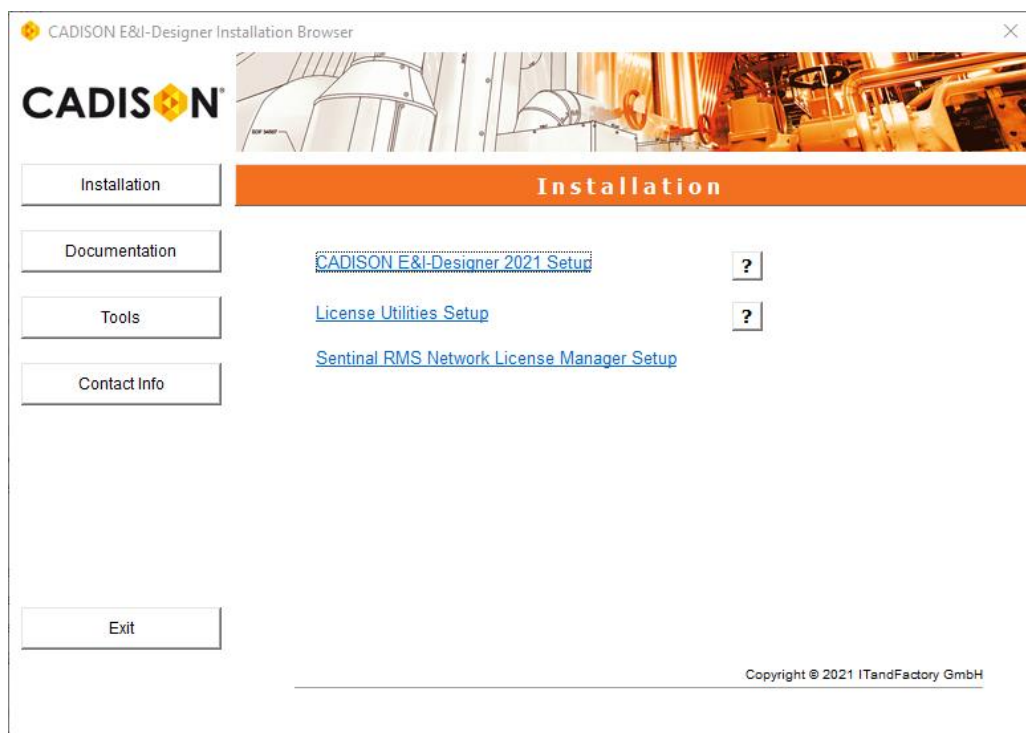
- Most of the systems have DotNet 4.7 Framework installed in their system; however, you can check the application from the Windows Feature dialog box and install it from the windows website if DotNet Framework is not available on your system. This is required to execute some of the CADISON E&I-Designer 2021 modules.

2. Local Client Installation

Start the installation by executing “**EAI_StartMenu.exe**” found in the root directory of the CADISON E&I-Designer DVD.

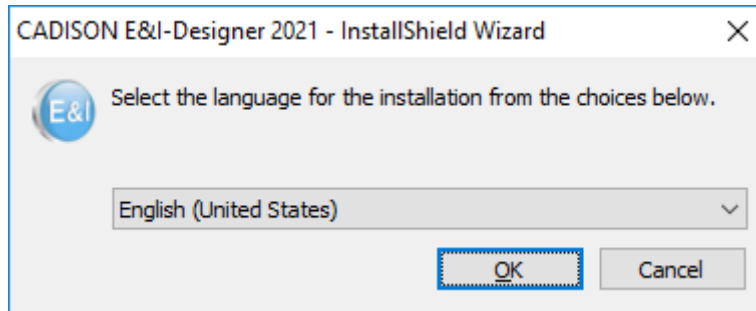


Then, click on the “**Installation**” button and afterwards click on the underlined link “**CADISON E&I-Designer 2021 Setup**”. You may also run the Setup directly by executing “**EAI_Setup64.exe**” file found in the DVD directory “**...Install\ EAI-Designer**”.

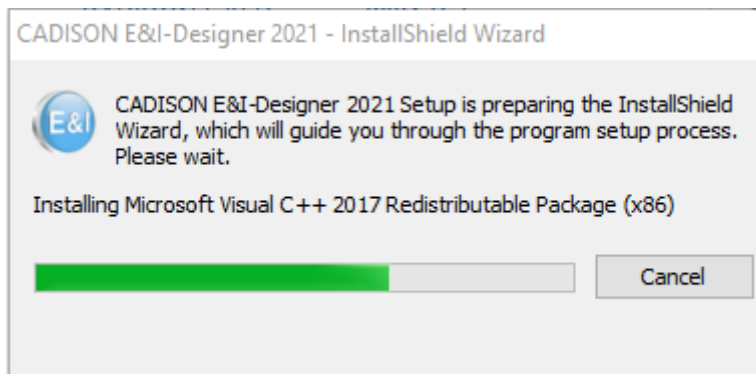


The installation procedure of the CADISON E&I-Designer 2021 is now in progress. Please follow the installation instructions on the screen.

1. Select the language of the CADISON E&I-Designer 2021 Setup.

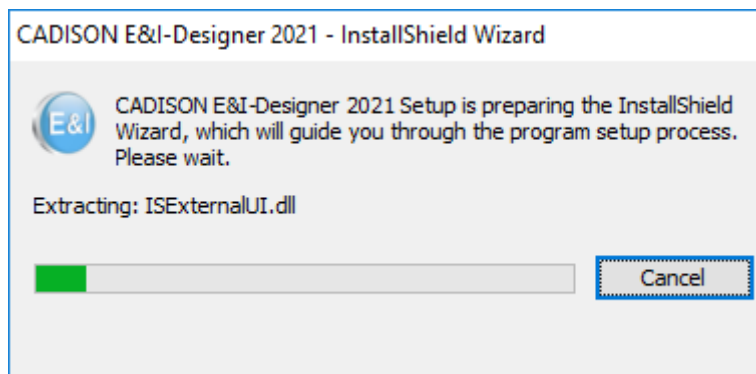


Note: The “Microsoft Visual C++ 2015-2019” or “Microsoft Visual C++ 2015-2019” be pre-installed in your computer, if not then the installation wizard will install “Microsoft Visual C++ 2015-2019” in your system



You might be asked to restart the system after Microsoft Visual C++ 2015 and/or 2019 installation. After which the CADISON E&I-Designer 2021 installation can be proceed by executing the Setup File again.

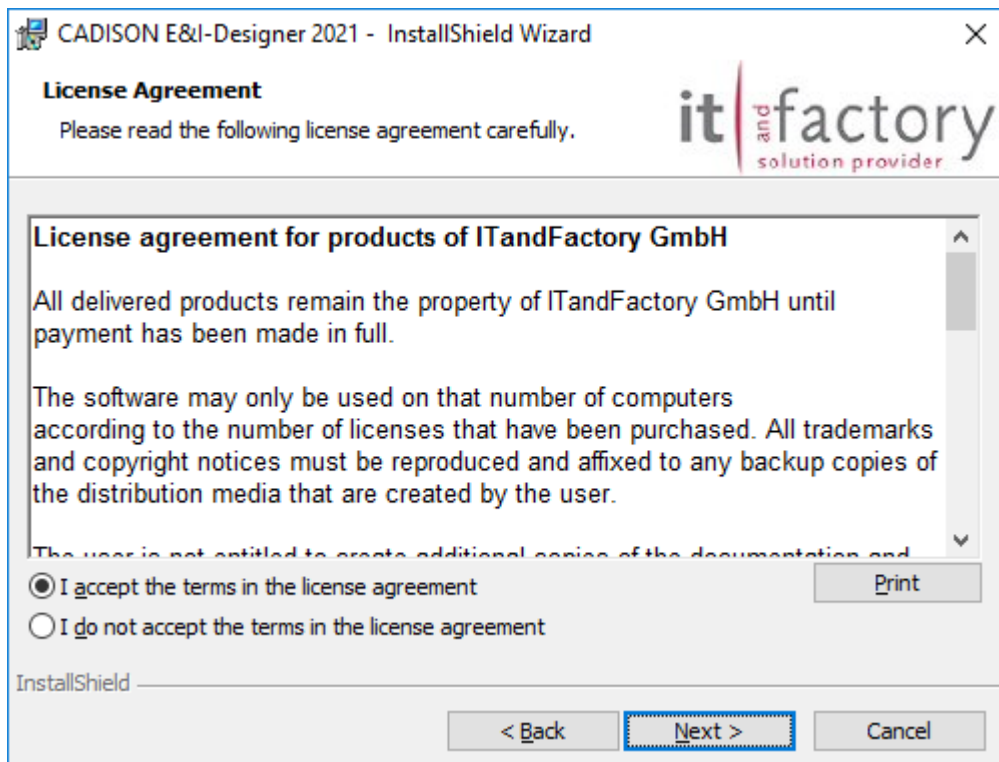
Please wait till the InstallShield wizard prepares the setup



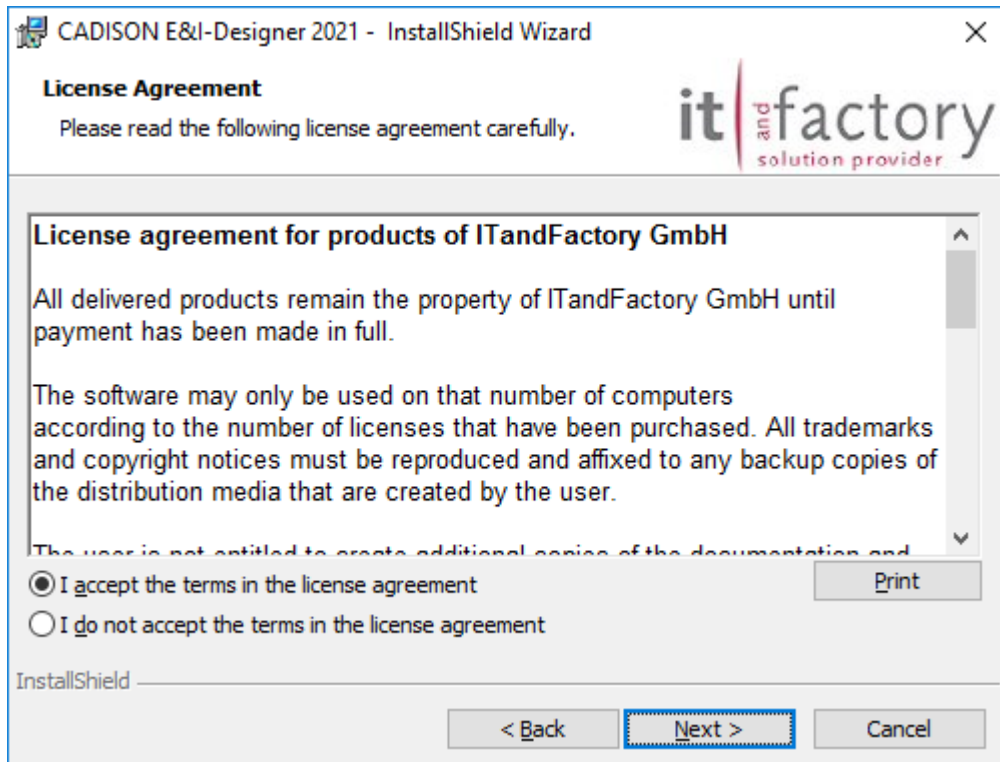
2. The **CADISON E&I-Designer 2021 – InstallShield Wizard** dialog box opens which will take you through the installation process. Click “**Next**” to continue.



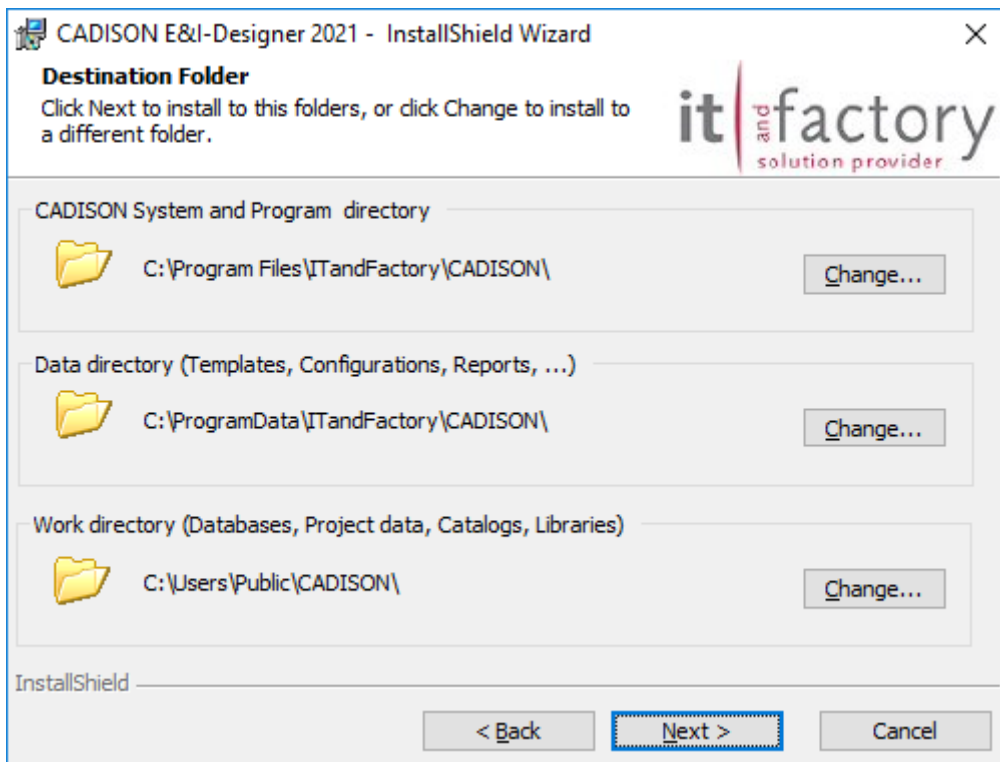
3. Please read the license agreement, confirm your acceptance, and then click “Next”.



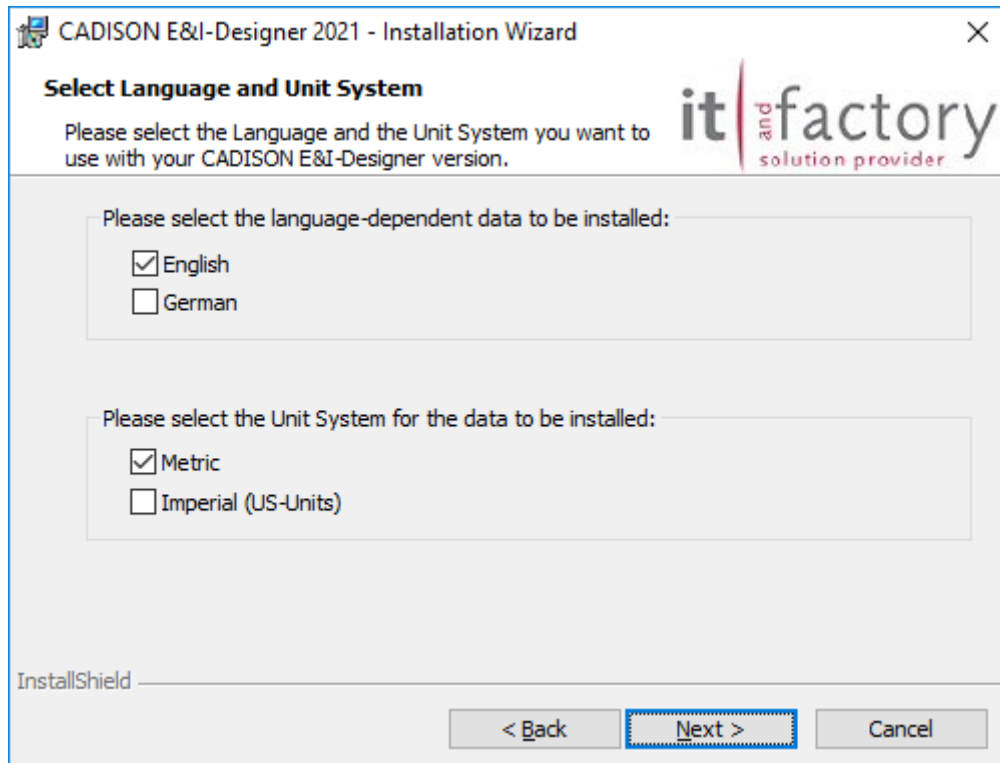
4. Read the important notes regarding the lifetime information of the CADISON E&I-Designer 2021 release, before clicking **Next** to continue.



5. Choose a root folder for configuration and program files, as well as the work folder for databases and projects.

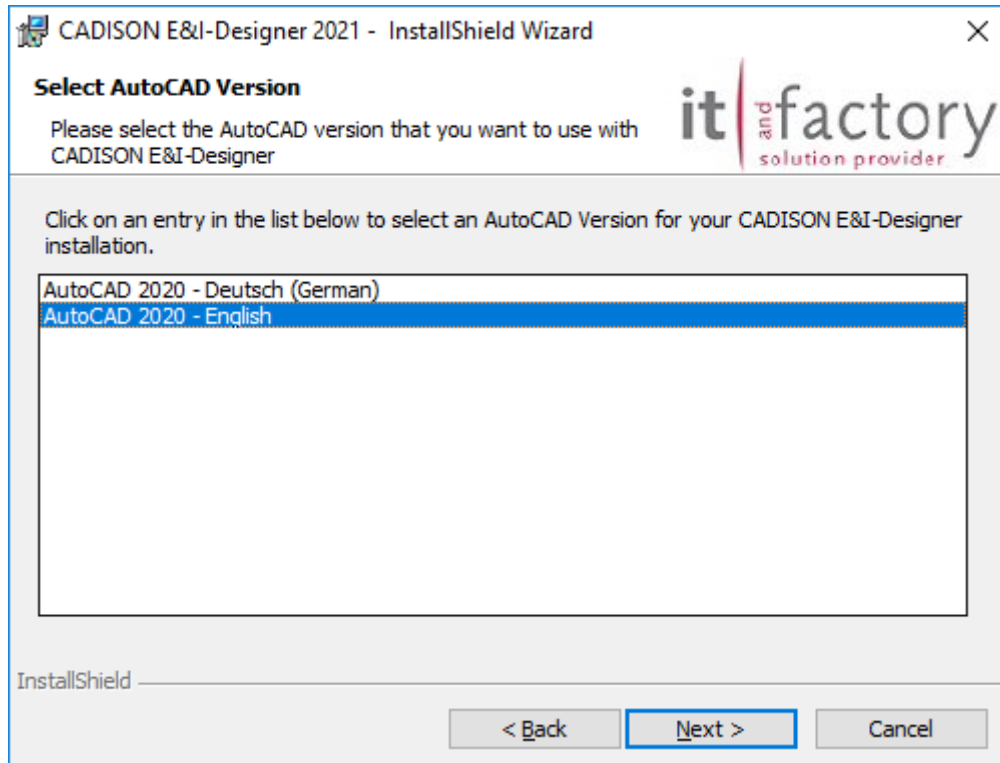


6. Select a language and unit system according to your requirements.



If you install CADISON E&I-Designer 2021 in English and in German languages (both languages) then all the default objects (visible in the object manager) will be duplicated. Hence, before re-initialization of system database, ensure the Library-folder contains only default-objects for one language. To use the default-objects in two languages, it is recommended to create another CADISON-Domain in that language with its own Library-folder.

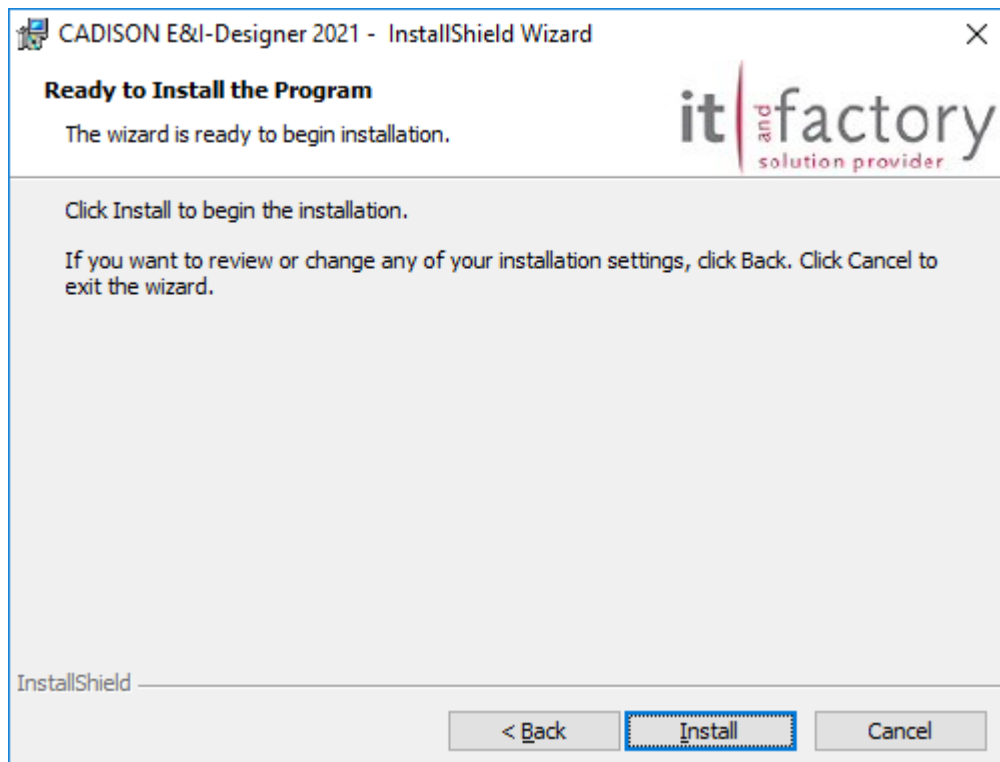
- If more than one version of AutoCAD is installed on your system, Setup will prompt you to select the AutoCAD version that you would like to use within CADISON E&I-Designer 2021. Only supported versions are listed here. Select the version you would like to use and click on **Next**.



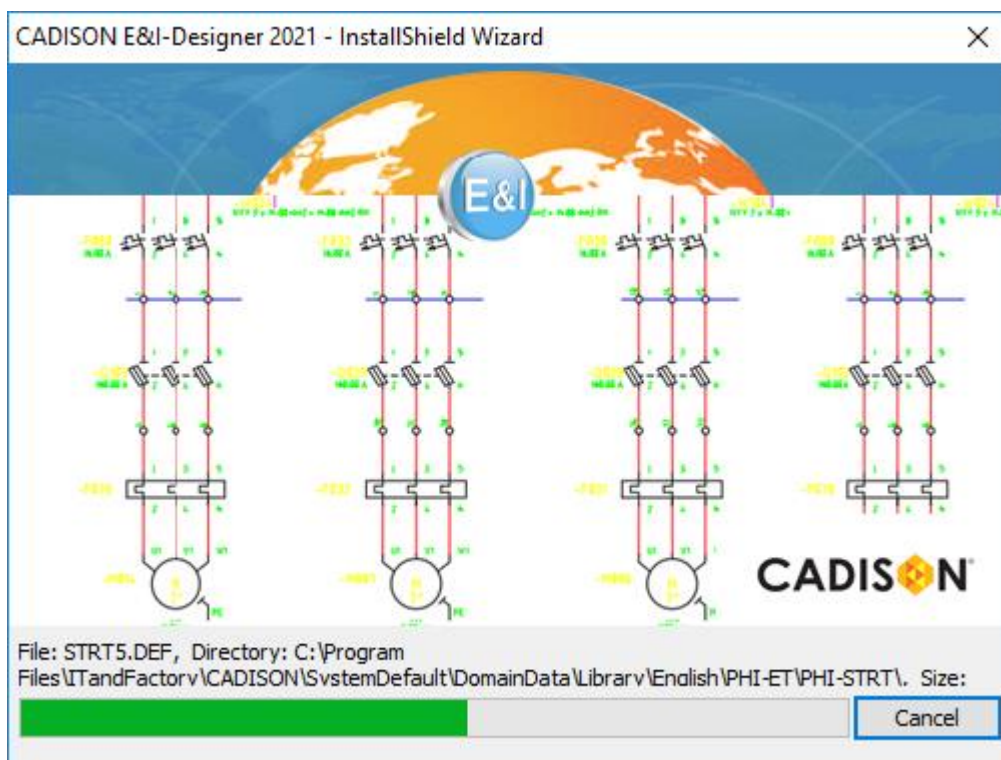
If only one version of AutoCAD is installed on your system, Setup automatically uses it and in the further course, no prompt will be displayed for selection of AutoCAD version.

If Setup does not find a supported version, but you are sure that it is installed properly, make sure to have started AutoCAD beforehand, so that a valid profile is created.

- Click on **“Install”** to run the installation procedure.



Now, Setup installs the CADISON E&I-Designer 2021 software to your system.



- The Setup completion dialog box appears. Click **“Finish”** to exit the Installation Wizard.



Once Setup has completed the procedure, you can continue with the configuration of your CADISON E&I-Designer 2021 installation (See chapter 3).

3. Post Installation

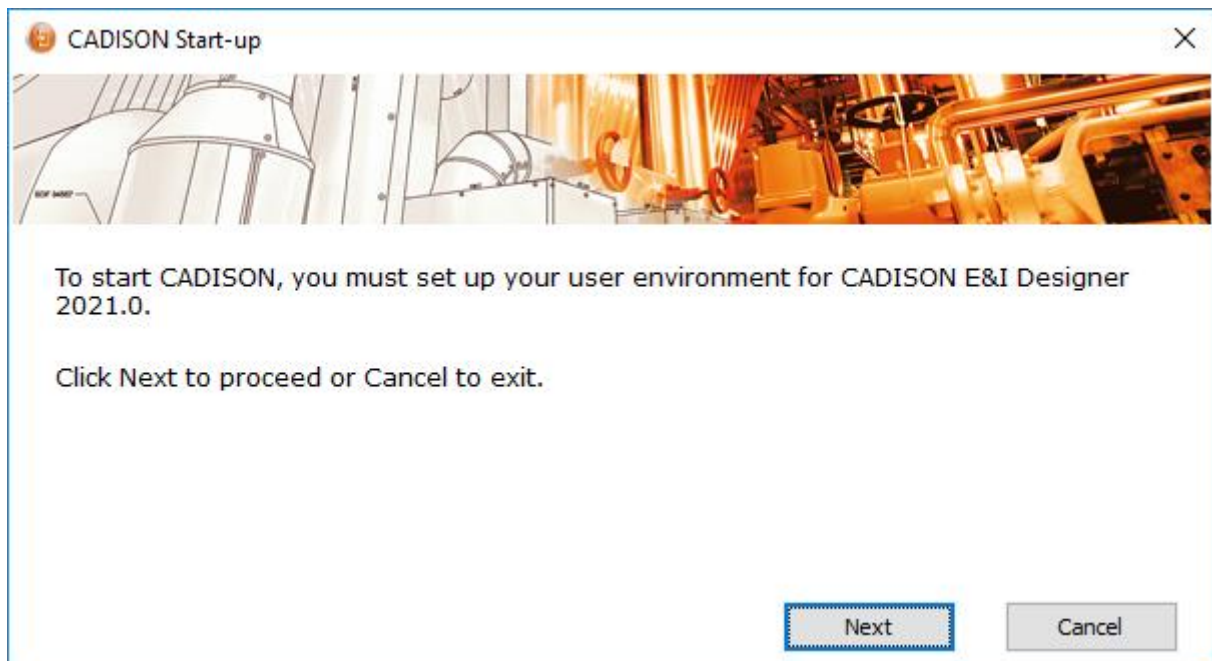
Startup Tool for CADISON

When a Windows user runs a CADISON E&I-Designer 2021 application for the first time, such as, e.g., E&I-Designer, PDM, etc. the CADISON Startup window automatically appears. The Startup Tool sets up CADISON E&I-Designer 2021 for the logged in Windows user, in which the necessary user environment variables and domain settings are automatically added. In addition, the CADISON profile for the selected AutoCAD version is created for the first time, CADISON E&I-Designer 2021 is started and then the appropriate CUIX files are copied to the user home directory so that the user can continue with his designer session immediately.

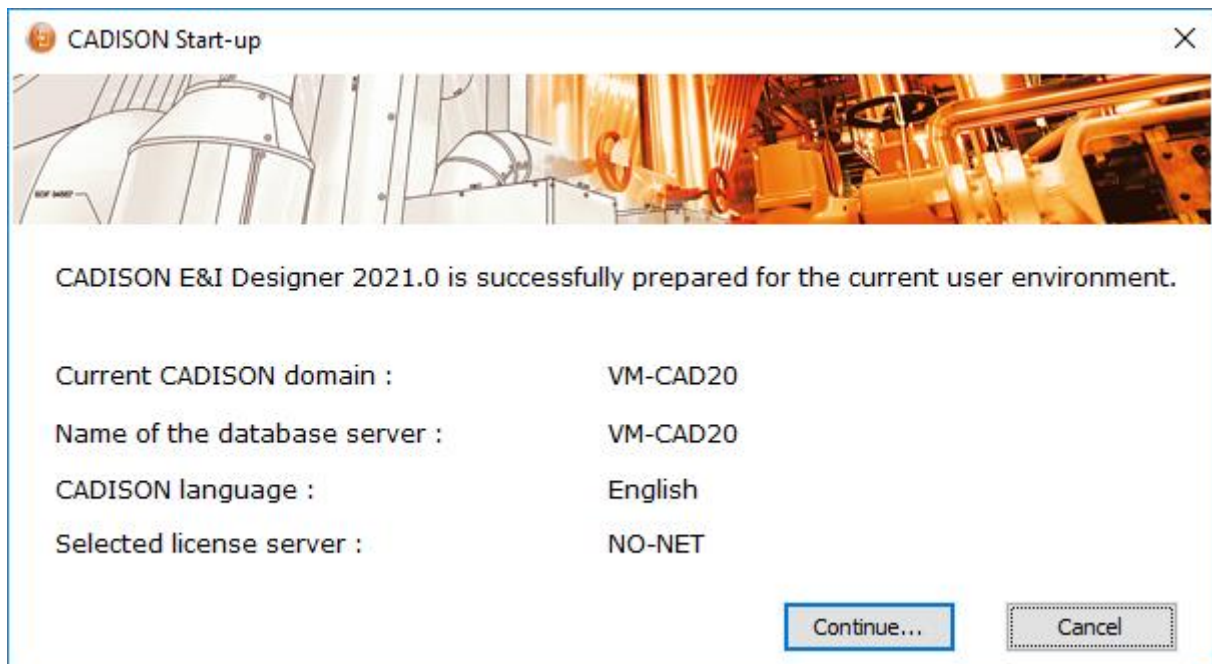
To create the CADISON profile, the CADISON Profile Creator is automatically executed by the Startup Tool. If there is only one AutoCAD profile on your system, the Profile Creator will automatically apply this profile as a template to create the CADISON profile, and then you will not be prompted to select the AutoCAD profile. If the tool does not detect a supported AutoCAD profile at this point, make sure that AutoCAD is started once so that a valid profile exists. With AutoCAD Mechanical the profile << VANILLA >> has to be activated manually.



An AutoCAD profile is only recognized as valid once it has been started with AutoCAD.

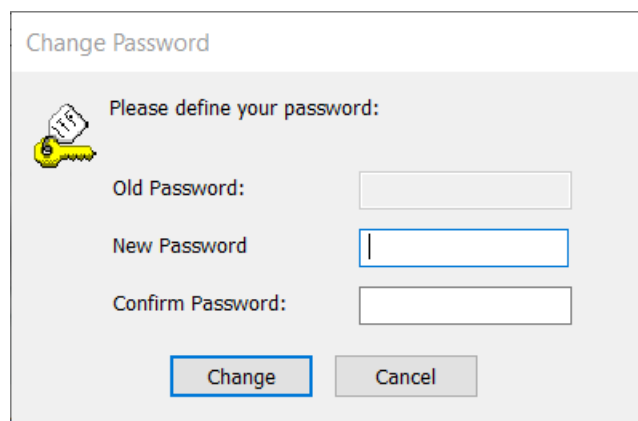


When the startup window appears, please click on "Next".

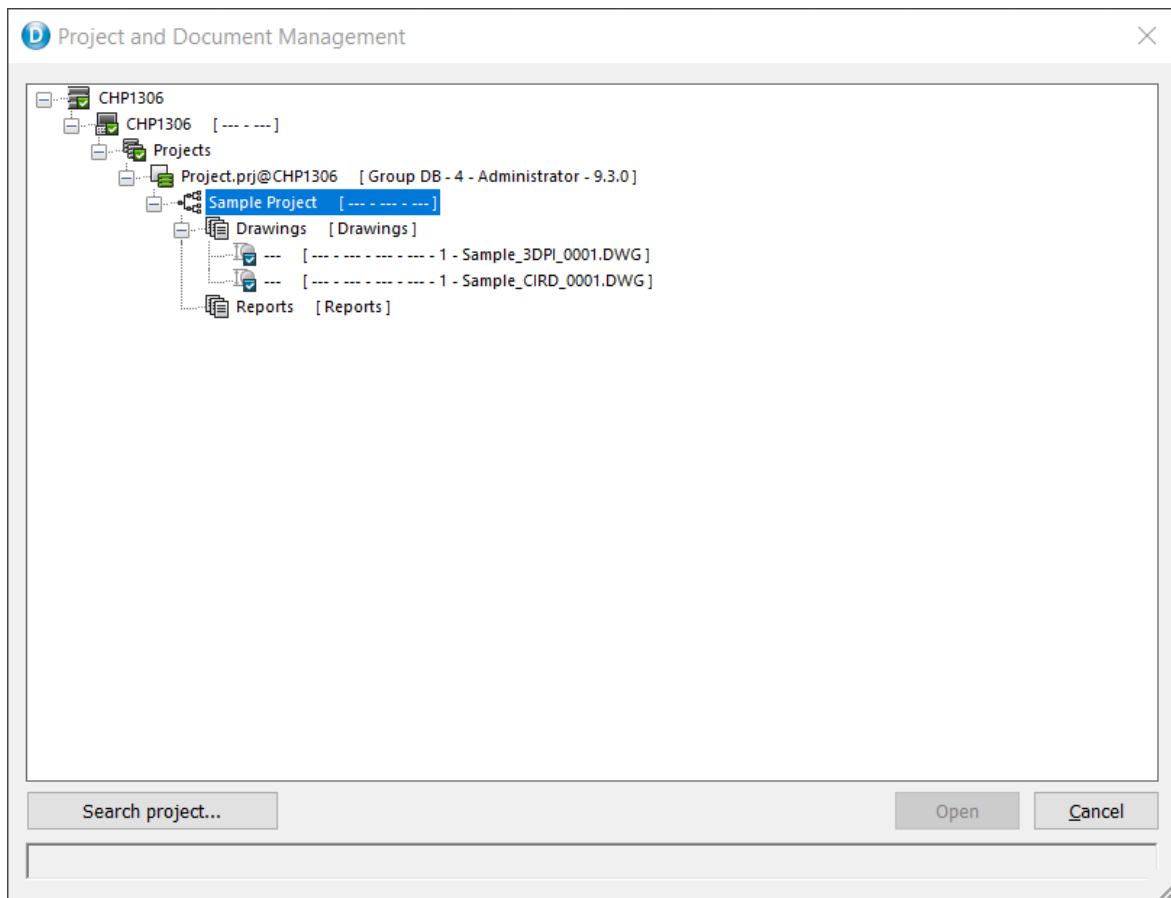


When the settings for the current user are completed, click Continue... to start your CADISON E&I-Designer 2021 session.

Afterwards “Change Password” dialog will appear. Here you can set the password.



After setting your password, Project and Document Management window will be displayed. Now you can start working in CADISON E&I-Designer 2021.

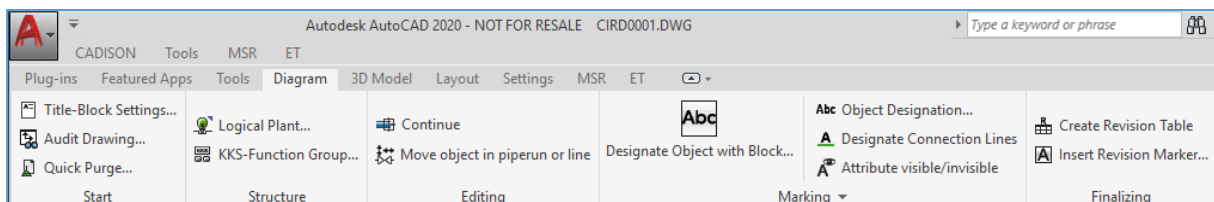


Necessary Adjustments in AutoCAD Designer-Interface

If you have installed E&I-Designer 2021, a user interface is available directly after the installation. For this, a “CADISON” workspace is created. If you would like to work with the classic interface, you can use the toolbox (to be activated using menus).

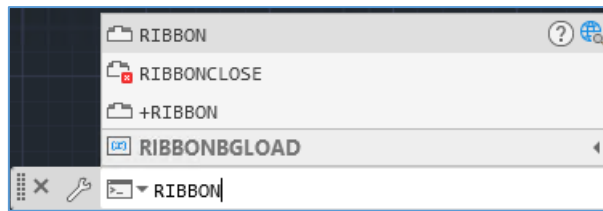
The user interface consists of a Ribbon and a Quick Access-Toolbar. With a new installation, if need be, the Ribbon should be turned on and the Quick Access Toolbar should be placed under the Ribbon.

If after installation, your interface looks like this...

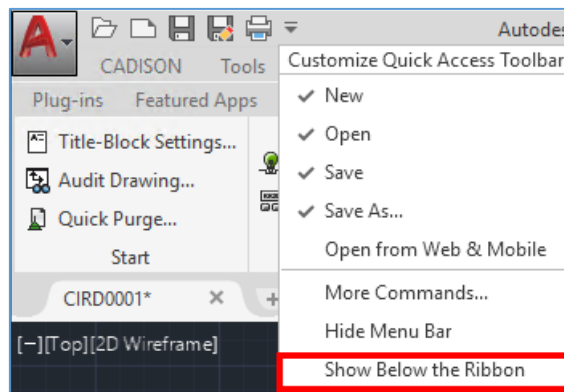


... Then proceed as follows:

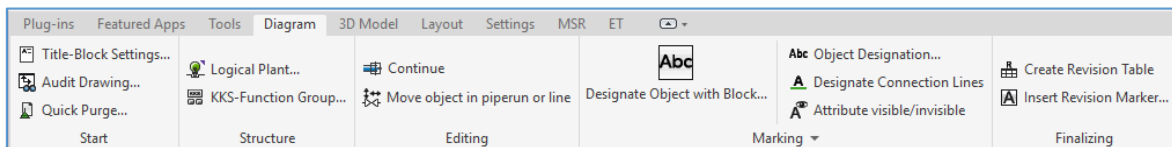
1. First, if the Ribbon is not visible, then the Ribbon must be activated. For this, type “**Ribbon**” in the AutoCAD command line.



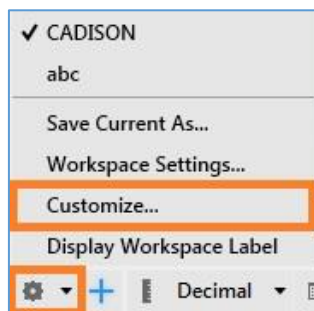
2. The Quick Access Toolbar must be manually set under the Ribbon. For this, click on the arrow-button at the right end of the toolbar and select “**show below the Ribbon**”.



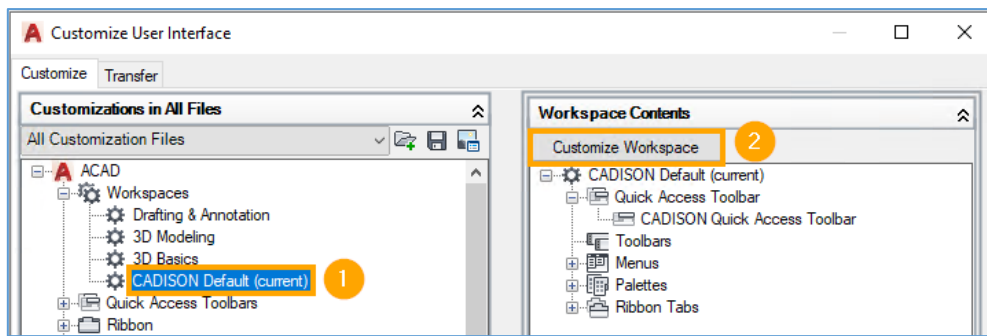
3. The sequence of the tab must be corrected at the beginning, since AutoCAD reads it randomly. The required sequence is “**Tools, Diagram, 3D-Model, Layout, Settings, MSR, ET**”. The AutoCAD-Plug-in tab can be disabled with right click and via “show tab”. Here is an image of the current user interface:



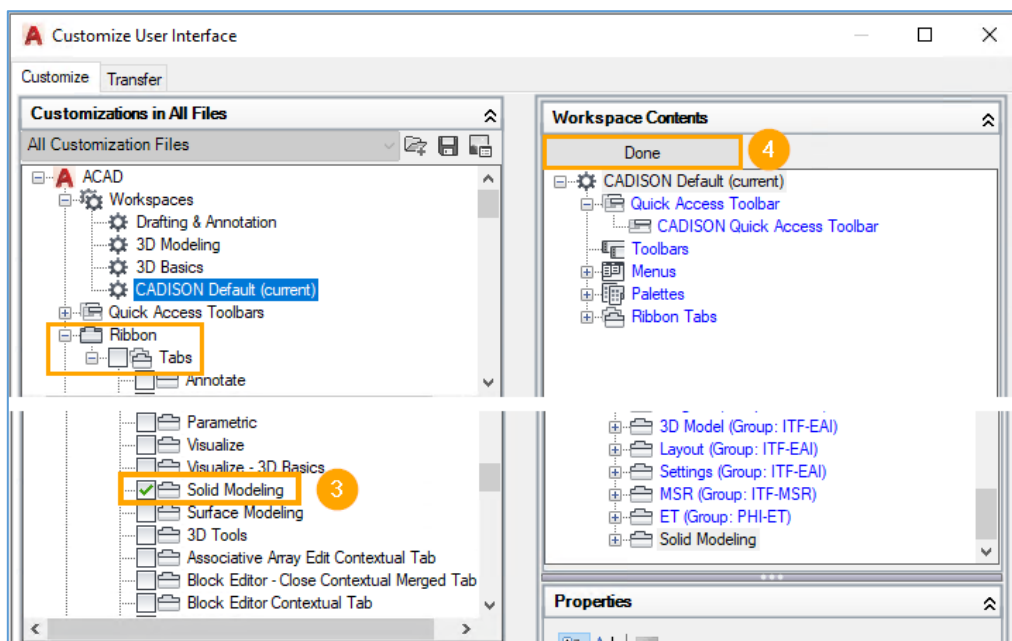
4. If complex 3D-Models must be created in AutoCAD, it is recommended to additionally enable an AutoCAD-Tab such as “**Solids**”. For this, click on “**Customize...**” below right in the work space settings.



Then, first click on “**CADISON**” (1.) workspace at the top left and on the right alongside on “**Customize Workspace**” (2.).



On the left side, you can then enable the desired tab using the checkmark under “**Ribbon > Tabs**” (3.). Next, click “**Done**” (4) on the right and “**OK**”.



Installation with a different AutoCAD version

In the current version of the setup, it is not possible to replace an AutoCAD version with another version without reinstalling CADISON E&I-Designer 2021. In order to be able to use CADISON E&I-Designer 2021 with another supported AutoCAD version, you must follow the steps below:

1. Uninstall CADISON E&I-Designer 2021 on your system. Make sure that all changed files and configurations that you have used in E&I-Designer are backed up beforehand.
2. After uninstalling, you must run the CADISON E&I-Designer 2021 setup again.
3. During the installation you can select the current AutoCAD version which you like to use with the CADISON E&I-Designer.
4. The setup then installs the required data and configures CADISON E&I-Designer 2021 with the newly selected AutoCAD version. It is not necessary to restart the system. System initialization is also not necessary.

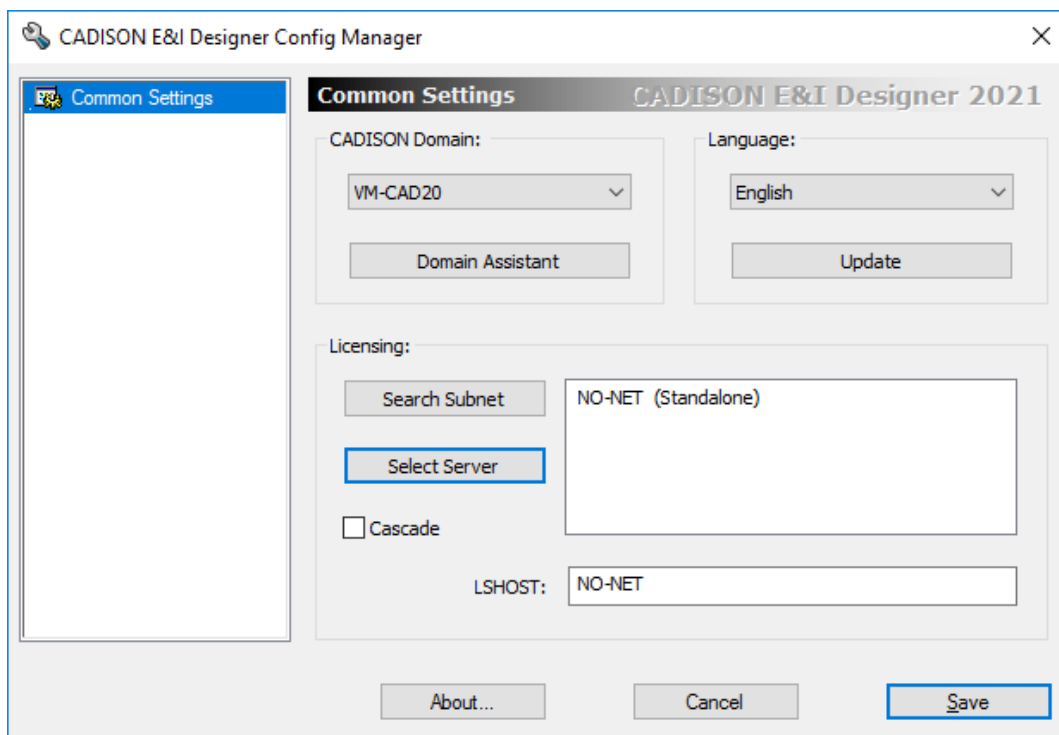
Installation of the Network License Manager (NLM)

For the installation of the Network-License manager, start the setup of “Sentinel RMS License Manager” from the installation DVD. If an older release of Sentinel is installed on your system, uninstall this old version of the software before installing the new release.

For additional information, refer to EAI_Licensemanager.pdf document.

Licensing

In order to re-adjust CADISON E&I Designer 2021 to operate with Network Licensing Management procedures, use the CADISON E&I Designer 2021 Config Manager or the Domain Assistant to change license mode.



You will find further information in the document EAI_Licensemanager.pdf.

4. Installation in unattended mode

CADISON E&I-Designer can be installed in a dialog-based manner or via the command line in unattended mode. If you want to install CADISON E&I-Designer in unattended mode on your system, you can customise the script file "Install_EAI_2021.cmd" from the "Tools" directory of the CADISON E&I-Designer 2021 DVD to your requirements and then run it as an administrator via the command line. In this context, please note the following:

The following parameters are used to execute the CADISON E&I-Designer installation via command lines:

Parameter	Description
/L1033	Language ID for the English installation.
/L1031	Language ID for the German installation.
/s	Hides the setup initialization dialog.
/v	Windows Installer parameters enclosed in apostrophes.
/q	Passive installation with a simple user interface.
INSTALL_ENGLISH=1	Installation of the English-dependent files.
INSTALL_GERMAN=1	Installation of the German-dependent files.
UNIT_METRIC=1	Installation of the metric data.
UNIT_IMPERIAL=1	Installation of the imperial data.
INSTALLDIR	Program root path for E&I-Designer.
CDSN_PROGRAMDATA_PATH	Program data path for E&I-Designer.
CDSN_WORK_PATH	Path for working directory (projects and databases).
/NORESTART	No reboot after installation is complete.
/LI	Name of the installation log file.
SILENT_ACAD_ID	Product ID of the selected AutoCAD version.
ACAD2021=1	Flag for the installation of AutoCAD 2021 and AutoCAD 2022-specific data.
ACAD2020 =1	Flag for the installation of AutoCAD 2020-specific data.

The CADISON E&I-Designer installation program requires the following two parameters in order to adopt the AutoCAD version that is to be used for the installation:

- ACAD2021=1 or ACAD2020=1
- SILENT_ACAD_ID=[ACAD ID]

The following table shows the parameters for all supported AutoCAD versions:

Supported AutoCAD Product	ID	Flag
AutoCAD 2022	SILENT_ACAD_ID=5101	ACAD2021=1
AutoCAD Architecture 2022	SILENT_ACAD_ID=5104	ACAD2021=1
AutoCAD Mechanical 2022	SILENT_ACAD_ID=5105	ACAD2021=1
Inventor 2022	SILENT_ACAD_ID=5113	ACAD2021=1
AutoCAD 2021	SILENT_ACAD_ID=4101	ACAD2021=1
AutoCAD Architecture 2021	SILENT_ACAD_ID=4104	ACAD2021=1
AutoCAD Mechanical 2021	SILENT_ACAD_ID=4105	ACAD2021=1
Inventor 2021	SILENT_ACAD_ID=4113	ACAD2021=1
AutoCAD 2020	SILENT_ACAD_ID=3001	ACAD2020=1
AutoCAD Architecture 2020	SILENT_ACAD_ID=3004	ACAD2020=1
AutoCAD Mechanical 2020	SILENT_ACAD_ID=3005	ACAD2020=1
Inventor 2020	SILENT_ACAD_ID=3013	ACAD2020=1

Please note that AutoCAD 2021 and AutoCAD 2022 product group use the same flag, as both products are binary compatible.

Example of a command line installation with the following criteria:

Installation language:	English	/L1033
Selected language for the data:	English	INSTALL_ENGLISH=1
System-Unit:	Metric	UNIT_METRIC=1
Selected AutoCAD:	AutoCAD 2022	SILENT_ACAD_ID=5101 ACAD2021=1
Program path:	C:\ProgramData\ITandFactory\CADISON	INSTALLDIR="C:\ProgramData\ITandFactory\CADISON"
Data-Path:	C:\ProgramData\ITandFactory\CADISON	CDSN_PROGRAMDATA_PATH="C:\Program Files\ITandFactory\CADISON"
Path for working directory:	C:\Users\Public\CADISON	CDSN_WORK_PATH="C:\Users\Public\CADISON"

```
e:\EAI_R210_DVD\Install\EAI-Designer\esai_setup64.exe /L1033 /s /v"/qb INSTALL_ENGLISH=1 UNIT_METRIC=1
SILENT_ACAD_ID=5101 ACAD2021=1 INSTALLDIR="C:\Program Files\ITandFactory\CADISON"
CDSN_PROGRAMDATA_PATH="C:\Program Files\ITandFactory\CADISON"
CDSN_WORK_PATH="C:\Users\Public\CADISON"
/LI %temp%\EAI2021_%COMPUTERNAME%.log"
```

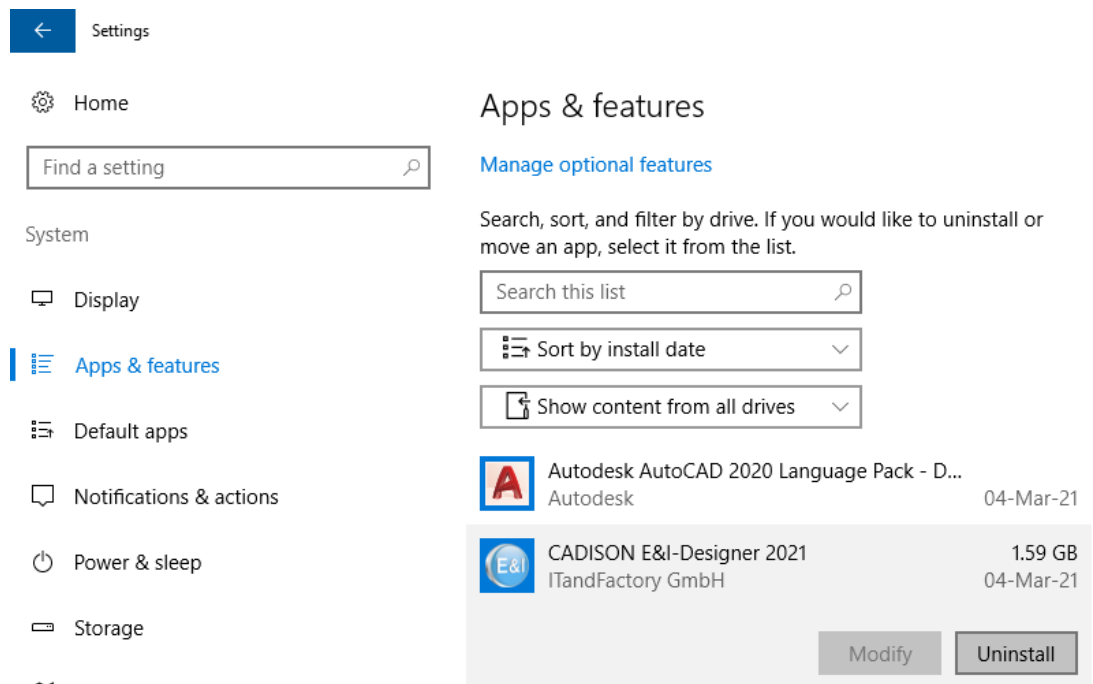
The setup file "esai_setup64.exe" to be executed is located in the following subdirectory on the CADISON E&I-Designer DVD

Install\ EAI-Designer

5. Uninstall

There are two ways of uninstalling CADISON E&I-Designer 2021:

1. Via the Windows menu "Apps and Features":
 - a. Select Start> Settings> Apps> Apps and Features.
 - b. You will now receive a list of all installed programs. Select CADISON E&I-Designer 2021 and click on the "Uninstall" button.



- c. You may have to confirm that you want to uninstall the program.

2. Via the command line:

- a. Execute the "Uninstall_EAI_2021.cmd" file from the "Tools" subdirectory of the CADISON E&I-Designer 2021 DVD in order to uninstall CADISON E&I-Designer 2021 from your system.
- b. Alternatively, you can uninstall the software directly from the command line. To do this, you need to run the following command in the command prompt window

```
msiexec.exe /x {49BFD43D-80BB-472E-A7DD-F879476843C6}
```